

BACKETBALL

Kimme
Athletic Supply Co.

team.sports.specialists

Washington • Oregon • Idaho



Spokane Store
E. 202 Mission Ave.
Spokane, WA. 99202
phone:
509-326-7710
800-541-6803
fax:
509-325-3913

Coeur d'Alene Store
405 W. Neider
Ste. #106, #4
Coeur d'Alene,
ID. 83814
phone:
208-277-1020
866-440-5461
fax:
208-277-1024

Yakima Store
2105 W. Lincoln Ave.
Suite 100
Yakima, WA. 98902
phone:
509-573-9001
800-554-2366
fax:
509-573-9050

Redmond Store
16101 NE. 87th St.
Redmond,
WA. 98052
phone:
425-882-1456
800-732-9259

www.kimmelathletic.com

2011
Team Sports Specialist!

Baden Basketballs

Certain models have limited availability from manufacturers, check with your Kimmel sales rep for availability.

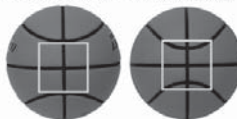
Prices are subject to change without notice. For up to date prices, call your Kimmel Sales or Customer Service Representatives. 1-800-541-6803

WIAA Adopted Ball

Baden Perfection Series

Balanced Panel Widths

PERFECTION OTHER BASKETBALLS



By spreading out the channels, the new Perfection's balanced panel design provides 48% less channel material than other basketballs. Perfection's balanced panel width gives you the best feel, balance and performance in basketball.

Elimination Of Channel Cluster

Perfection eliminates the lumpy, uneven channel cluster that causes inconsistent bounce and forces players to rotate the ball before passing or shooting.



Baden Lexum Elite Perfection Series Basketball

Features Ultra MicroFiber Technology and has lower pebble, deeper channels and does not discolor or absorb moisture. Exclusive symmetrical design.

- Advanced Microfiber Technology:
 - DOES NOT Absorb Moisture
 - DOES NOT Get Heavy
 - DOES NOT Discolor
- Patented Cushion Control Technology™.
- The Best Feel in Basketball.
- Deeper Channels.
- Increased Durability.
- NFHS Approved.

\$52⁹⁵

Team Price

- BX7E - Men's
- BX6E - Women's



Baden Lexum Composite Leather Basketball

The Baden Official Wide Channel basketball features Cushion Control Technology™ with a durable composite cover and a precision nylon-wound carcass. It is designed to provide a true bounce and flight.

- Official size and weight.
- Precision nylon-wound carcass.
- 2-ply butyl bladder.
- Balanced for a true bounce and flight.
- Approved by NFHS.

\$43⁵⁰

Team Price

- BX451 - Men's
- BX446 - Women's



Ultimate Ball Locker

- Made of Heavy-Duty 1" blue powder-coated steel tubing.
- Can be padlocked (lock not included).
- Rolls easily on two 8" wheels and 2 rear multi-directional wheels.
- Holds up to 28 official size basketballs.
- Assembly required.
- **Dimensions:** 45"L x 24"W x 38"H.

\$314⁹⁹

Team Price

**Special Order Item
Call Kimmel For Pricing*



Lok-Rack Ball Storage (3 Tube Pictured)

- Constructed of 1/2" square steel tubing.
- Can be stood on end in storage rooms when space is at a minimum.
- Balls can be secured with any standard padlock (lock not included).

\$495⁰⁰

Team Price

- WICKS3 - \$395.00
- WICKS4 - \$450.00



Baden Basketballs (INDOOR COMPOSITE)

		Kimmel Price	Team Price
BX7E	Baden Lexum Elite Competition - MEN'S	\$59.95	\$52.95
BX6E	Baden Lexum Elite Competition - 28.5"	\$59.95	\$52.95
BX451	Baden Deluxe Competition - MEN'S	\$48.95	\$43.50
BX446	Baden Deluxe Competition - 28.5"	\$48.95	\$43.50

(INDOOR / OUTDOOR)

B301	Baden Contender Synthetic - MEN'S	\$29.95	\$21.95
B285W	Baden Contender Synthetic - 28.5"	\$29.95	\$21.95

(TRAINING / AUTOGRAPH)

BX335	"Skil-coach" Composite Oversized - 35"	\$69.95	\$63.95
BR635	"Skil-coach" Rubber Oversized - 35"	\$32.95	\$26.95
BR633	"Skil-coach" Rubber Oversized - 33"	\$32.95	\$26.95
BHT7R	"Skil-coach" Rubber Heavy Trainer - MEN'S	\$34.95	\$27.95
BHT6R	"Skil-coach" Rubber Heavy Trainer - WOS	\$34.95	\$27.95
BX500A	Autograph Ball (Two White Panels)	\$32.95	\$24.95

Baden Lexum Contender Basketball

Baden's 301 & 285W Lexum Contender Indoor/Outdoor Basketballs are official size and weight, have cushion control technology, are precision nylon-wound, have a deluxe synthetic leather cover, 2-ply butyl bladders. These basketballs feature wide channels.

- B301 - Men's
- B285W - Women's

\$21⁹⁵

Team Price



Baden SKILCOACH Oversized Basketball

Oversized trainer. Great for ball handling and shooting drills alike. Precision nylon-wound butyl bladder. Mens 35".

- BX335 - Men's

\$63⁹⁵

Team Price



Baden SKILCOACH Heavy Trainer Basketball

Heavy trainer. Great for strength training drills. Men's Weight: 44 oz.

Women's Weight: 40 oz.

- BHT7R - Men's
- BHT6R - Women's

\$27⁹⁵

Team Price



TAG Triangle Basketball Rack

2 Tier Basketball Ball Rack. Capacity is 12 basketballs.

- TBC100

\$179⁹⁵

Team Price

**Special Order Item
Call Kimmel For Pricing*



Need Camp Balls?

Call your local Kimmel sales rep today and see how you can qualify for custom camp balls at incredibly low team prices.

Must be ordered by Feb. 15, 2012 for June 1, 2012 delivery.

Please allow 90-120 days for delivery after art approval.

509-326-7710 or Toll Free 800-541-6803

Basketballs & Misc. Equipment

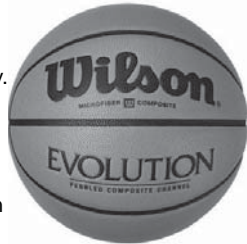
Certain models have limited availability from manufacturers, check with your Kimmel sales rep for availability.

Prices are subject to change without notice. For up to date prices, call your Kimmel Sales or Customer Service Representatives. 1-800-541-6803

OSAA Adopted Ball

Wilson Evolution Composite Indoor Basketball

The Wilson Evolution basketball is approved by the NCAA and the NFHS for game play and has an Advanced Composite leather cover which provides superior softness and enhances shooting proficiency. This basketball uses Cushion Core Technology which combines low-density sponge rubber with ultra-durable butyl rubber, producing a basketball with an exceptionally soft feel. The Evolution is rotationally wound with high performance 3-ply nylon thread, producing superior shape retention and consistent ball rebound.



B0516 - Men's
B0586 - Women's

\$48⁵⁰
Team Price

Wilson Basketballs

	Kimmel Price	Team Price
B0516 Wilson Evolution - MEN'S.....	\$54.95	\$48.50
B0586 Wilson Evolution - WOMEN'S.....	\$54.95	\$48.50
B0516OSAA Wilson Evolution - MEN'S - OSAA Stamp	\$54.95	\$47.95
B0586OSAA Wilson Evolution - WOMEN'S - OSAA Stamp....	\$54.95	\$47.95

IHSAA Adopted Ball

Spalding TF1000 ZK Microfiber Basketball

- Newly designed exclusive ZK Cover Material integrated with best selling decade long design.
- Advanced moisture management for improved Dry and Wet grip.
- Wide Channel Design.
- Designed for caliber competitive indoor play.
- NFHS Approved.



747338 - Men's
747348 - Women's 28.5"

\$44⁹⁵
Team Price

TAG Inflater Air Compressor

Multi purpose inflater air compressor.

TEI200

\$99⁹⁵
Team Price

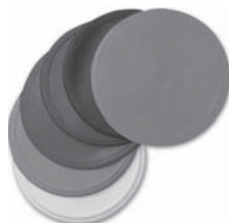


9" Orange Spots/Markers

9" diameter, soft flexible plastic. Sticks to gym floor without slipping.

SM12

\$1⁶⁵
Team Price



TAG Dribble Blinders

"Heads-Up" training aid glasses which block downward vision and teach the player to keep eyes on the field and not on ball. Conforms to the face for comfortable fit.

TDB200

\$3⁹⁵
Team Price



Gared Competition Breakaway Goal

The most popular and best selling goal in the market, designed to absorb fly-back energy. 2 Year Warranty.

- Front mount 5/8" x 18" single rim.
- Continuous no-tie rim attachment GAW anti-whip net included.
- Positive lock mechanism holds rim in solid playing position.
- Powder coat finish.
- Universal back plate accommodates most 42" and 48" rectangular and fan-shaped backboards.



Official Product of the National Federation of State High School Associations.
2000

\$220⁹⁵
Team Price

Spalding Rebound Ring

Develops rebounding skills. 10" diameter ring installs easily over any regulation goal.

411-611

\$55⁹⁵
Team Price



**Special Order Item*
Call Kimmel For Pricing

Goals/Nets

	Kimmel Price	Team Price
BA3180T BISON "180 Degree" Breakaway Goal	\$369.95	\$349.95
BA35E BISON "ELITE" Breakaway Goal	\$289.95	\$248.95
2000 GARED "Competition" Breakaway Goal	\$239.95	\$220.95
AWN Carron Anti-Whip Nets (Braided Nylon) - pr....	\$19.95	\$17.95
TBN095 TAG Anti-Whip Net (Hwt) - each.....	\$8.95	\$6.95
TBN105 TAG Anti-Whip Net (Nylon) - each.....	\$7.95	\$5.95
TBN130 TAG Playground Chain Net - each	\$9.95	\$7.95
TBN115 TAG P.E. Economy Net - each	\$3.95	\$2.95

Misc. Equipment

SPEED7 Licorice Speed Rope, 7' - each	\$2.50	\$2.25
SPEED8 Licorice Speed Rope, 8' - each	\$2.50	\$2.25
SPEED9 Licorice Speed Rope, 9' - each	\$2.50	\$2.25
SPEED10 Licorice Speed Rope, 10' - each	\$2.50	\$2.25
SPEED16 Licorice Speed Rope, 16' - each	\$4.50	\$3.95
10111 HoopSAQ Bag with Ball Holder	\$37.95	\$37.95
10121 HoopSAQ Jr. Bag with Ball Holder	\$34.95	\$34.95
10811 HoopSAQ Backpack with Ball Holder	\$37.95	\$37.95
TBC100 TAG Triangle Rack 12 Ball Capacity	\$199.95	\$179.95
WICKS3 Wicks Super Duty Locking Ball Rack - 15 Balls...	\$450.00	\$425.00
WICKS4 Wicks Super Duty Locking Ball Rack - 20 Balls...	\$510.00	\$495.00
TOWEL NWS 20" x 40" White Towels - DZ.....	\$29.95	\$26.95
TGA720 Brass Whistle - DZ	\$17.95	\$15.95
TGA715 Plastic Whistle - DZ.....	\$11.95	\$8.95
FOX Fox 40 Official's Whistle - each	\$5.95	\$4.95
W116 Smitty Official's Lanyard - each	\$3.95	\$3.50
WG20 Whistle Tip Guard, Rubber - each	\$0.95	
TGA730 Whistle Lanyards, DZ.....	\$11.95	\$8.95
451 1" Pressure Tape 1" x 108" - each	\$2.95	\$2.50
Colors: Black, White, Scarlet, Maroon, Royal, Navy, Kelly, Gold, Orange		
452 2" Pressure Tape 2" x 108", - each.....	\$5.95	\$5.00
Colors: Black, White, Scarlet, Maroon, Royal, Navy, Kelly, Gold, Orange		
KIM200 Ball Bag, holds 6 balls, 2 compartment.....	\$59.95	\$49.95
Colors: Black, Scarlet, Cardinal, Royal, Navy, Dark Green, Purple		
BB36 Economy 6-Ball carrier. Specify color.....	\$24.95	\$21.95
M50 Deluxe Mesh Equipment Bag, 24" x 36" ea....	\$12.95	\$9.95
TBB495 Mesh Ball Bag, White - each	\$9.95	\$8.95
TBB500 Large Ball Carrier - each	\$5.95	\$4.95
M20 Mesh Laundry Bags w/ ID tag, 15" x 22" - ea....	\$5.95	\$4.95
TEI200 Electric Ball Inflater with gauge	\$119.95	\$99.95
IPC Electric Inflater with gauge	\$119.95	\$99.95
IF Inflater Needles - each	\$0.30	\$0.30
PRG1 Pressure gauge, To check ball pressure - ea....	\$5.95	\$4.95
SC606 Robic Dual Memory Countdown Stop Watch ..	\$39.95	\$32.95
SC505 Robic Five Memory Chrono Stop Watch	\$24.95	\$21.95
SC500E Robic Single Event Stop watch	\$18.95	\$17.95

Nike Basketball Shoes & Apparel

Some apparel styles shown are only available as Special Order items. Certain models have limited availability from manufacturers, check with your Kimmel sales rep for availability.

Prices are subject to change without notice. For up to date prices, call your Kimmel Sales or Customer Service Representatives. 1-800-541-6803

Nike Products are Not Available in Western Washington and Western Oregon.

Nike Zoom Hyperdunk 2011 TB

Designed for the baller who wants exceptional lockdown and responsiveness in a lightweight package that's ready for the game played at all levels.

UPPER: New, more breathable than ever, Flywire construction that locks the foot down and conforms to the foot to minimize any unnecessary movement inside the shoe.

MIDSOLE: Lightweight Phylon midsole for impact protection and comfort coupled with a 3D reinforced midfoot shank for torsional rigidity.

OUTSOLE: Solid rubber outsole with herringbone traction pattern for the ultimate in on-court traction.

454143 - Men's

454150 - Women's

Sizes: 8-14, 15, 16 (M), 5-12 (W)

Stock Colors: Black/White, White/Black, Royal/White, Red/White, Navy/White, Green/White, Columbia/White, Purple/White



~~\$119⁹⁵~~
Kimmel Price

\$99⁹⁵
Team Price

Nike Zoom Hyperfuse 2011 TB

Designed for the consumer that demands style, durability, breathability and responsiveness all in a revolutionary lightweight package.

UPPER: Hyperfuse technology combines lightweight breathability and durability with a more efficient manner to create footwear for today's consumer.

MIDSOLE: Lightweight Phylon midsole for impact protection and comfort coupled with forefoot Nike Zoom unit for low to the ground responsiveness.

OUTSOLE: Solid rubber outsole with herringbone traction pattern for the ultimate in on-court traction.

454146 - Men's

454153 - Women's

Sizes: 8-14, 15, 16 (M), 5-12 (W)

Stock Colors: Black/White, White/Black, White/Royal, White/Red, White/Navy



~~\$97⁹⁸~~
Kimmel Price

\$80⁹⁵
Team Price

Nike Air Max Destiny TB

Nike technology at the entry level kill-zone for the uncompromising basketball player looking for maximum performance.

UPPER: A leather upper coupled with a new generation Flywire quarter panel boasts lightweight durability, strength and support.

MIDSOLE: Injected Phylon midsole and a newly improved Max Air heel unit provides impact protection and a smooth and comfortable ride.

454140 - Men's

454148 - Women's

Sizes: 6-14, 15, 16 (M), 5-12 (W)

Stock Colors: Black/White, White/Black



~~\$87⁹⁸~~
Kimmel Price

\$71⁹⁵
Team Price

Nike All Day Polo

Considered Dri-FIT polo using 100% recycled polyester fabric. Self-fabric white piping at shoulders and natural side seams. 100% recycled buttons along center front placket. Swoosh design trademark at upper right chest. Body length: 30.25" (size large). Fabric: Body: 100% polyester.

378241

Sizes: M-XXL

Colors: Black/White, White/Black, Navy/White, Royal/White, Scarlet/White.



~~\$35⁰⁰~~
Kimmel Price

\$26⁹⁵
Team Price

Nike Reckoning II Polo

Performance fundamental polo for all of your team needs. Relaxed cut polo is constructed with lightweight Dri-FIT to ensure you stay cool, comfortable and dry. Expanded color palette allows any team to match school colors. Swoosh design trademark on front right chest. Body length: 30.25" (size large). FABRIC: 100% polyester.

418636

Sizes: S-XXL

Colors: Silver, Black, White, Dark Green, Navy, Light Blue, Royal, Purple, Cardinal, Scarlet, Dark Maroon, Vegas Gold, Orange

*Special Order Item

Call Kimmel For Pricing

~~\$50⁰⁰~~
Kimmel Price

\$39⁹⁵
Team Price



Nike Championship III Jacket

Fully-lined, full-zip woven jacket contrast color inset on front chest and upper back neck. Zippered side-seam pockets with Nike+ enabled pocket. Elastic sleeve cuffs and elastic drawcord at hem. Embroidered Swoosh design trademark at upper right chest. Body length: 29.5" (size large).

Fabric: Body: 100% polyester. Lining: 100% polyester.

378250

Sizes: S-XXL

Colors: Black, Dk. Green, Navy, Royal, Purple, Cardinal, Scarlet

*Special Order Item

Call Kimmel For Pricing

~~\$65⁰⁰~~
Kimmel Price

\$47⁹⁵
Team Price



Nike Championship III Pant

Lined pull-on elastic drawcord pant with contrast insets and covered legs zips. Embroidered Swoosh design trademark at upper left hip. Inseam: 32.875" (size large). Fabric: Body: 100% polyester. Lining: 100% polyester.

378252

Sizes: S-XXL

Colors: Black, Dk. Green, Navy, Royal, Purple, Cardinal, Scarlet

*Special Order Item

Call Kimmel For Pricing

~~\$55⁰⁰~~
Kimmel Price

\$39⁹⁵
Team Price



Nike Women's Classic Knit Jacket

Full-zip Dri-FIT waffle knit warm-up jacket with mesh underarm insets, higher collar for increased warmth, side front zipper pockets with Nike+ enabled pocket in left front pocket. Contrast piping at front chest and sides. Rib knit cuffs and waistband. Embroidered Swoosh design trademark at upper right front. Body length: 26" (size medium). FABRIC: 100% polyester.

399913

Sizes: XS-XL

Colors: Black, White, Anthracite, Dark Green, Navy, Royal, Scarlet

*Special Order Item

Call Kimmel For Pricing

~~\$70⁰⁰~~
Kimmel Price

\$51⁹⁵
Team Price



Nike Women's Classic Knit Pant

Dri-FIT waffle knit warm-up pant with mesh back knee panels for increased breathability, contrast piping at sides, side seam pockets, and leg zippers. Embroidered Swoosh design trademark at left front. Inseam: 31" (size medium). FABRIC: 100% polyester.

399914

Sizes: XS-XL

Colors: Black, White, Anthracite, Dark Green, Navy, Royal, Scarlet

*Special Order Item

Call Kimmel For Pricing

~~\$50⁰⁰~~
Kimmel Price

\$36⁹⁵
Team Price



Nike Basketball Uniforms and Warm-Ups

Basketball Uniforms are only available as Special Order Items. Call your Kimmel Sales or Customer Service Rep for ordering information and deadlines.

Prices are subject to change without notice. For up to date prices, call your Kimmel Sales or Customer Service Representatives. 1-800-541-6803

Nike Products are Not Available in Western Washington and Western Oregon.

Nike Men's Hyper Elite Game Jersey & Short

CONTENT:
 • Body: 100% Recycled Polyester. Collar: 92% Polyester/8% Spandex.
DESCRIPTION:
 System of dress game uniform. Double knit fabrication. V-neck design. Contrast printed silicone striping down side panels. Contrast neck band. Nike Team Sports jock tag at lower left hem. Jersey Body length: 31.25" (size large).
SIZES: S-3XL**

**Special Order Item
 Call Kimmel For Pricing*

8 Uniform Minimum

Uniform w/
 1-Color Lettering
~~\$115⁰⁰~~
 Regular Price
\$79⁹⁵
 Kimmel Price

Uniform w/
 2-Color Lettering
~~\$130⁰⁰~~
 Regular Price
\$89⁹⁵
 Kimmel Price



Nike DQT Gator Men's Game Jersey & Short

CONTENT:
 • 100% polyester.
DESCRIPTION:
 • Jersey - 3-5 WEEK DELIVERY UPON ARTWORK APPROVAL. Fully sublimated lightweight performance V-neck game jersey. Contrast team color name across center front chest and straight printed side panel. Nike Team Sports jock tag at lower left hem. Body length: 31" (size large).
NFHS approved. Exclusive order form required.
 • Short - 3-5 WEEK DELIVERY UPON ARTWORK APPROVAL. Fully sublimated lightweight performance game short. Drawcord waistband and contrast team color side panel inset with no sideseam. Swoosh design trademark at lower left hip. Inseam: 11" (size large). Tall inseam: 12" (size LT).
NFHS approved.
SIZES: S-3XL*

*Additional upcharges
**Special Order Item
 Call Kimmel For Pricing*



Nike Women's Hyper Elite Game Jersey & Short

CONTENT:
 • Body: 100% Recycled Polyester. Collar: 92% Polyester/8% Spandex.
DESCRIPTION:
 • Jersey - System of dress game uniform. Double knit fabrication. V-neck design. Contrast printed silicone striping down side panels. Contrast neck band. Nike Team Sports jock tag at lower left hem. Body width: 19.25", Body length: 29.25" (size medium). **NFHS Approved.**
 • Short - System of dress game short. Woven fabrication. 2" gripper elastic waistband with drawcord for adjustability. Contrast printed stripe on side panels with laser perforation for ultimate ventilation. Swoosh design trademark at left hip. Hip width: 23.25" (size medium), Inseam length: 10.25" (all sizes). **NFHS Approved.**
SIZES: S-3XL**

**Special Order Item
 Call Kimmel For Pricing*

8 Uniform Minimum

Uniform w/
 1-Color Lettering
~~\$110⁰⁰~~
 Regular Price
\$76⁹⁵
 Kimmel Price

Uniform w/
 2-Color Lettering
~~\$125⁰⁰~~
 Regular Price
\$86⁹⁵
 Kimmel Price



Nike DQT UConn Women's Game Jersey & Short

CONTENT:
 • 100% polyester
DESCRIPTION:
 • Jersey - 3-5 WEEK DELIVERY UPON ARTWORK APPROVAL. Fully sublimated lightweight performance V-neck game jersey. Contrast team color name across center front chest and inset on side panel. Nike Team Sports jock tag at lower left hem. Body length: 31" (size medium). Tall body length: +2.375" (all sizes). **NFHS approved.** Exclusive order form required.
 • Short - 3-5 WEEK DELIVERY UPON ARTWORK APPROVAL. Fully sublimated lightweight performance game short. Drawcord waistband and contrast team color side panel inset with no side seam. Swoosh design trademark at lower left hip. Inseam: 10" (size medium). Tall inseam: +1" (all sizes). **NFHS approved.**
SIZES: S-3XL*

*Additional upcharges
**Special Order Item
 Call Kimmel For Pricing*



Nike L/S Shoot Around II Shirt & Tear Away Pant

CONTENT:
 • 100% polyester Shirt and Pant
DESCRIPTION:
 • Shirt - Dri-FIT long-sleeve shooting shirt. Contrast color blocking on shoulders and rib knit fabrication on bottom of sleeve hems and neck band. Embroidered Swoosh design trademark at upper right chest. Body width: 24.5", Body length: 30.75" (size large).
 • Pant - Dri-FIT knit snap tear away pant. Contrast set on taping down side panels and around bottom hem. Covered elastic waistband with draw cord for adjustability. Open bottom hem. Embroidered Swoosh design trademark at left leg. Hip width: 23.25", Inseam length: 31.75" (size large).
SIZES: S-3XL* (Also available in Tall Sizes)

*Additional upcharges
**Special Order Item
 Call Kimmel For Pricing*

8 Uniform Minimum

Shooting Shirts
~~\$50⁰⁰~~
 Regular Price
\$37⁹⁵
 Kimmel Price

Tear Away Pant
~~\$65⁰⁰~~
 Regular Price
\$48⁹⁵
 Kimmel Price



Nike Defender S/S Shooting Shirt

CONTENT:
 • 100% polyester.
DESCRIPTION:
 • Dri-FIT pique Short sleeve shooting shirt. Contrast inset across center chest for a clean look on court. V-neck collar. Embroidered Swoosh design trademark at upper right chest. Nike team sports jock tag at lower left hem. Body length: 30.5" (size medium).
Shooting Shirts

SIZES: S-2XL, 3XL*
 *Additional upcharges
~~\$48⁰⁰~~
 Regular Price
\$35⁹⁵
 Kimmel Price
**Special Order Item
 Call Kimmel For Pricing*



Nike Storrs Tear Away Pant

Four-needle elastic waistband. Full-snap away side seams. Options: +2" and +4" additional length. Nike Team Sports jock tag at lower left hem. Fabric: White: 100% polyester. Colors: 100% nylon.

217483
Sizes: S-3XL*
 *Additional upcharges

**Special Order Item
 Call Kimmel For Pricing*



Under Armour Basketball Shoes & Apparel

Some apparel styles shown are only available as Special Order items. Certain models have limited availability from manufacturers, check with your Kimmel sales rep for availability. Prices are subject to change without notice. For up to date prices, call your Kimmel Sales or Customer Service Representatives. 1-800-541-6803

Under Armour Micro G Supersonic

UPPER: Modern, lightweight construction featuring UA's proprietary HeatGear® material for the ultimate in lightweight anatomical fit, breathability and moisture management. Lightweight synthetic patent in the forefoot and medial heel for increased support.



MIDSOLE: Internal and external full-length Micro G® foam, UA's revolutionary light and low cushioning innovation. Midfoot TPU shank for torsional rigidity and lateral stability. OUTSOLE: Full-length one-piece rubber outsole with multi-directional traction pattern for exceptional lateral and linear movement.

1220956

Sizes: 7.5-13, 14, 15, 16

Colors: Black, White/Black, Forest/White, Royal/White, Red/White, Navy/White, Maroon/White

~~\$94.98~~
Kimmel Price

\$79.95
Team Price

Under Armour Team Catalyst Polo

Performance Fabrics made from Recycled Plastic Bottles. Signature HeatGear® moisture transport system keeps you cool and dry.



Lightweight, durable high-gauge knit fabric provides maximum comfort against the skin.

Anti-Odor Technology prevents the growth of odor causing microbes.

30+ UPF protects your skin from the sun's harmful rays and inhibits premature aging.

1217748

Sizes: S-4XL

Colors: Black, White, Red, Navy, Royal, Forest/White, Maroon/White

**Special Order Item*

Call Kimmel For Pricing

~~\$49.98~~
Kimmel Price

\$38.95
Team Price

Under Armour Scout 1/4 Zip Pullover

Smooth face fabrication provides a clean athletic look.

Soft terry back provides loft and warmth.

Raglan sleeve construction.

30+ UPF protects your skin from the sun's harmful rays and aging.

100% Polyester.

1211496

Sizes: S-3XL

Colors: Black, Red, Navy, Royal, Forest, Maroon, Graphite

~~\$49.98~~
Kimmel Price

\$39.95
Team Price



Under Armour Micro G® Threat

Designed for the baller who wants exceptional lockdown and responsiveness in a lightweight package that's ready for the game played at all levels.



UPPER: New, more breathable than ever, Flywire construction that locks the foot down and conforms to the foot to minimize any unnecessary movement inside the shoe.

MIDSOLE: Lightweight Phylon midsole for impact protection and comfort coupled with a 3D reinforced midfoot shank for torsional rigidity.

OUTSOLE: Solid rubber outsole with herringbone traction pattern for the ultimate in on-court traction.

1222925

Sizes: 7.5-13, 14, 15, 16

Colors: Black/White, White/Black, White/Royal, White/Red, White/Navy, White/Forest, White/Maroon

~~\$77.98~~
Kimmel Price

\$64.95
Team Price

Under Armour Scout Knit Pant

Smooth face fabrication provides a clean athletic look.

Soft terry back provides loft and warmth.

Side pockets.

Zippered leg openings for easy on/off.

30+ UPF protects your skin from the sun's harmful rays and inhibits premature aging.

Inseam Length: Size LG 32" (+/- 1/2" per size).

100% Polyester.

1211496

Sizes: S-3XL

Colors: Black, Navy

~~\$49.98~~
Kimmel Price

\$38.95
Team Price



Under Armour Micro G® Threat - Youth

Designed for the baller who wants exceptional lockdown and responsiveness in a lightweight package that's ready for the game played at all levels.



UPPER: New, more breathable than ever, Flywire construction that locks the foot down and conforms to the foot to minimize any unnecessary movement inside the shoe.

MIDSOLE: Lightweight Phylon midsole for impact protection and comfort coupled with a 3D reinforced midfoot shank for torsional rigidity.

OUTSOLE: Solid rubber outsole with herringbone traction pattern for the ultimate in on-court traction.

1229153

Sizes: 3.5-7

Colors: Black/White, White/Black, White/Red, White/Navy

~~\$57.98~~
Kimmel Price

\$44.95
Team Price

Under Armour Advance Woven Warm-Up Jacket

Lightweight & durable warm-ups. Highly water resistant w/DWR finish. Drop mesh lining. Side pockets. 100% Polyester.

1222183

Sizes: S-4XL (Also available in Tall Sizes)

Colors: Black/White, Black/Steeltown Gold, Black/Red, Navy/White, Navy/Steeltown Gold, Red/White, Royal/White, Forest/White, Maroon/White, Graphite/White, Purple/White, Cardinal/White



**Special Order Item*

Call Kimmel For Pricing

~~\$54.98~~
Kimmel Price

\$42.95
Team Price

Under Armour Adult Signature On Field Coaches Polo

Signature sideline polo features closed hole mesh ventilation, color block pattern and anti-odor technology.

1222410

Sizes: S-4XL

Colors: Black/White, White/Black, Black/Steeltown Gold, Black/Red, Black/Orange, Navy/White, Navy/Steeltown Gold, Red/White, Royal/White, Royal/Steeltown Gold, Forest/White, Maroon/White, Purple/White, Cardinal/White



~~\$64.98~~
Kimmel Price

\$49.95
Team Price

Under Armour Advance Woven Warm-Up Pant

Lightweight & durable warm-ups. Highly water resistant w/DWR finish. Drop mesh lining. Side pockets. 100% Polyester. Open zippered bottom.

1222185

Sizes: S-4XL (Also available in Tall Sizes)

Colors: Black/White, Black/Steeltown Gold, Black/Red, Navy/White, Navy/Steeltown Gold, Red/White, Royal/White, Forest/White, Maroon/White, Graphite/White, Purple/White, Cardinal/White



**Special Order Item*

Call Kimmel For Pricing

~~\$49.98~~
Kimmel Price

\$38.95
Team Price

adidas Basketball Shoes & Apparel

Some apparel styles shown are only available as Special Order items. Certain models have limited availability from manufacturers, check with your Kimmel sales rep for availability. Prices are subject to change without notice. For up to date prices, call your Kimmel Sales or Customer Service Representatives. 1-800-541-6803

adidas adiPower™ Howard

Inspired by Dwight's punishing style of play, a newly engineered SPRINT SKIN panel was created for optimal support without the weight. Couple this with TWIST TORSION® SYSTEM, and you have an explosive recipe for full-court dominance.

G20281

Sizes: 6.5-14, 15, 16

Stock Colors: Black/White, White/Black, Royal/White, Red/White, Navy/White



~~\$94⁹⁵~~
Kimmel Price

\$76⁹⁵
Team Price

adidas Pro Model 0

Leave your opponents in the dust with the fastest Pro Model to date. The revolutionary shell toe breathes and flexes to keep feet cool while you burn up the court.

Upper: Synthetic leather upper for lightweight and durability. Patent leather trim for great looks on and off the court. Revolutionary light weight toe for ultimate protection.

Inlay: PU insole for durable comfort.

Midsole: Molded EVA midsole for fit and comfort. TORSION® SYSTEM for midfoot integrity.

Outsole: Non-marking rubber outsole.

G22882 - Men's

Sizes: 6.5-14, 15, 16

Colors: White, Black, Navy, Royal, Red, Forest



~~\$79⁹⁵~~
Kimmel Price

\$64⁹⁵
Team Price

G21013 - Women's

Sizes: 6-12, 13

Colors: White, Black, Navy, Royal, Red

G21017 - Youth

Sizes: 3-7

Colors: White, Black

~~\$59⁹⁵~~
Kimmel Price

\$48⁹⁵
Team Price
Youth

Kimmel Athletic is the Exclusive Supplier of Nevco Scoreboards

For 75 years, Nevco has provided facilities with the highest quality display and scoring products in the industry. No other family-owned scoreboard company in the world can match our global size and longevity. We believe this gives YOU a distinct advantage in buying Nevco products. We believe our focus is refreshing in today's business environment. We don't answer to corporate boards or shareholders. Rather, we focus all of our experience and resources on meeting the unique needs of YOU, OUR VALUED CUSTOMER.

Kimmel Athletic is proud to be a partner with the biggest name in Integrated Display and Scoring Solutions.

Check out the full line of Nevco Scoreboards, Displays, Signage at www.nevco.com

Bison Scorers Table

- Bleacher model. Full color printing process.
- Folding 16 inch deep table with four drink holders.
- Vinyl cover over thick urethane foam.
- Steel & aluminum structure.
- Built-in non marking casters.
- 110 Volt Receptacles computer, shot clock etc.

***Special Order Item**
Call Kimmel For Pricing



adidas Scorch Polo

ClimaCool short sleeve polo with dropped hem at back. 29" back length. Mesh inserts at shoulder, sleeves and upper back. Three-button placket and self-fabric collar. Applied 3-Stripe on upper sleeves. NFHS/NCAA Compliant. 100% polyester interlock.

1925

Size: S-3XL

Color: Black, Navy, Royal, Red, Forest, Maroon, Orange, Sand Storm, Light Onix, Diva, Purple, Cardinal

***Special Order Item**
Call Kimmel For Pricing

~~\$49⁹⁵~~
Kimmel Price

\$38⁹⁵
Team Price



adidas Women's Scorch Polo

Women's CLIMACOOL® short-sleeve polo top with UV protection (UPF 35+). Mesh panel at back and across shoulders. Small ring-snaps at front placket. Applied 3-Stripes at sleeves. Scorch neck-tape detail. adidas brandmark at right chest. CLIMACOOL® logo inside back neck. NCAA/NFHS compliant. 100% polyester interlock. Length: 26" (size medium)

1923

Size: S-3XL

Color: Black, Navy, Royal, Red, Forest, Maroon, Orange, Sand Storm, Light Onix, Diva, Purple, Cardinal

***Special Order Item**
Call Kimmel For Pricing

~~\$44⁹⁵~~
Kimmel Price

\$38⁹⁵
Team Price



adidas miTeam adiZero™ Jacket

Lightest in class. Customize your miTeam adiZero™ warm-up jacket online in your team colors. Lightweight woven poly body with vertical ribbed texture. Mesh venting in Clima zones. CLIMALITE® materials wick-away moisture. NCAA/NFHS compliant. 100% polyester dobby. Length: 32" (size large).

P11403

Size: S-3XL

~~\$90⁰⁰~~
Kimmel Price

\$62⁹⁵
Team Price



adidas miTeam adiZero™ Pant

Customize your miTeam adiZero™ Pant in your team colors. Lightweight woven poly body with vertical ribbed texture with zip leg openings and open hem. Zipper pockets on pant. Mesh venting in Clima zones. CLIMALITE® material. NCAA/NFHS compliant. 100% polyester dobby. Inseam: 32" (size large).

P11370

Size: S-3XL

~~\$75⁰⁰~~
Kimmel Price

\$52⁹⁵
Team Price

***Special Order Item**
Call Kimmel For Pricing





Kimmel Athletic carries a full line of training equipment and gym accessories needed for the game and practice. Please call for pricing.
509-326-7710
Toll Free • 800-541-6803



Team/Equipment Bags & Ankle Braces

Certain models have limited availability from manufacturers, check with your Kimmel sales rep for availability. Prices are subject to change without notice. For up to date prices, call your Kimmel Sales or Customer Service Representatives. 1-800-541-6803

Deluxe Basketball Bag

This double compartment ball bag stores and transports 6 basketballs in style. Both compartments open across the front with double slider zippers. Includes an attached, 2" webbing, adjustable shoulder strap. 28" x 8 1/2" x 8".

KIM200

Colors: Black, Navy, Scarlet, Royal, Cardinal, Dk.

Green, Purple

~~\$59.95~~
Kimmel Price

\$49.95
Team Price



HoopSAQ by Sport Saq

Specifications:

28" Long x 12" Wide x 12" High. Made of durable 600 denier Polyester with vinyl backing. Weight is approx. 3 lbs. **Features and benefits: Unique BALL COMPARTMENT** - This is our CLAIM TO FAME... We invented this revolutionary feature - holds an official size/weight ball and can be easily personalized with embroidery or silk screen printing.

Separate (Ventilated) SHOE COMPARTMENT - Located at the opposite end from the Ball Compartment, it holds up to a size 18 pair of basketball shoes and is ventilated too.

Insulated DRINK HOLDERS - Located on the front of the bag on either side of the Personal Accessory Pocket, these pockets help keep drinks cool and easily accessible, fits 28 oz. sport bottles and most other 1-liter bottles.

Personal ACCESSORY POCKET - This pocket helps to organize personal items (CD/MP3 player, wallet, watch and keys) and is now REMOVABLE so that you can interchange it with our new TEAM COLOR PANEL KITS.

Ventilated WET COMPARTMENT - Located on the rear side of bag, this feature was designed to hold all your funky smelling stuff, i.e. wet towel, sweaty uniform/shirt/socks/etc.

10111

10121 - HoopSAQ Jr. - \$34.95

Color: Black

\$37.95

Team Price



Looking for Cinch Sacks?

Kimmel has got what you are looking for, from all of the major vendors like Under Armour, Nike and adidas.

Call your Kimmel Sales Rep or Customer Service for Team Prices and availability. **800-541-6803**

ASO Ankle Brace

The ASO ankle brace is one of the most popular ankle supports on the market today. Used by athletes at all levels for prevention or after acute ankle injuries, this brace provides eversion and inversion (side-to-side) ankle support while still allowing enough movement for athletic performance. This superior ankle brace is very popular in basketball and soccer, because it securely locks the ankle, similar to an athletic ankle taping, but does not contain hard plastic supports or pieces. The ASO Ankle Stabilizer's lace up closure allows for patient friendly application that can be applied quickly anywhere.

Universally made to fit either a left or right ankle.

26401

Sizes: XS-XL

Colors: Black

\$42.95

Team Price



Mueller "The One" Ankle Brace

THE ONE Ankle Brace The only "ONE" you'll need, this brace features adjustable straps that simulate figure 8 taping structure. Anti-slip side straps help protect against inversion and eversion ankle sprains.

Very light and low profile, THE ONE is comfortable to wear in shoes or cleats during competition. Ideal for basketball, football, baseball, softball, volleyball, soccer and other high-impact sports to help support strained, sprained, twisted or swollen ankles.

4111

Sizes: XS-XL

Colors: Black

\$27.95

Team Price

Mueller Ankle Brace Sizes		
Size	Men's	Women's
XS	6-7	7-8
SM	7-9	8-10
MD	9-11	10-12
LG	11-13	12-14
XL	13-15	14-16



BaqSaq by Sport Saq

Specifications: 20" High x 14" Wide x 13" Deep. Made of durable 600 denier. Polyester with vinyl backing. Weight is approx. 3 lbs. (empty).

Features and benefits: Unique BALL COMPARTMENT, Separate (Ventilated) SHOE COMPARTMENT, Insulated DRINK HOLDER, Personal ACCESSORY POCKET - (located on opposite side from bottle holder), Padded CD/MP3 PLAYER HOLDER.

10811

Colors: Black, Red, Royal



\$37.95

Team Price

Nike Brasilia 5 Medium Duffel

The Nike Brasilia Duffel Bag: Tough design, easy storage. Grab your gear and go with the Nike Brasilia 5 Duffel Bag. An athletic essential, this bag is made from ultra-durable fabric and has plenty of pockets to keep your game-time items secure and organized. Removable adjustable shoulder strap and dual handles for versatile carrying options. Zip main compartment with ventilation for storage. Side pockets for extra storage space. Front zip pocket for quick access. Dimensions: 25.5"L x 12"W x 12"H.

Fabric: 100% polyester

BA3233

Colors: Black, Royal, Navy, Varsity Red

~~\$42.00~~
Kimmel Price

\$29.95

Team Price



Under Armour PTH® Victory Medium Team Duffel

Great duffel bag for all of your workout gear and performance equipment.

- Custom card for team number or initials identification.
- Space for team customization.
- Large main-zip compartment with additional storage on side pocket.
- Mesh ventilation for breathability.
- Adjustable, padded shoulder strap and carry handle.
- Side pocket pull handle for easy grab access.
- PTH® plaid lining.
- Dimensions: 21"x12"x12.5".

1217555

Colors: Black, Royal, Red, Forest, Navy, Graphite, Maroon, Gold, Orange



~~\$40.00~~
Kimmel Price

\$34.95

Team Price

SWEDE-O Inner Lok 8™

Patented internal figure-8 strapping system assures proper strap placement, security; allows rapid game-time application. Features laminated foam padding, heavy-duty DuPont Cordura® nylon straps, junior ballistic nylon construction. Breathable tongue wicks moisture away from skin. Super-easy strap adjustment ensures custom fit, solid support Universal Right/Left.

0261

Sizes: S-XL

Color: White



\$29.95

Team Price

SWEDE-O Ankle Lok Brace

Exclusive patented ANKLE LOK® offset panel traps the laces between the inner and outer flap to hold the laces tighter longer than any other brace.

01010

Sizes: XS-XXL

Color: White



\$24.95

Team Price

Practice Apparel & Misc. Gear

Certain models have limited availability from manufacturers, check with your Kimmel sales rep for availability.

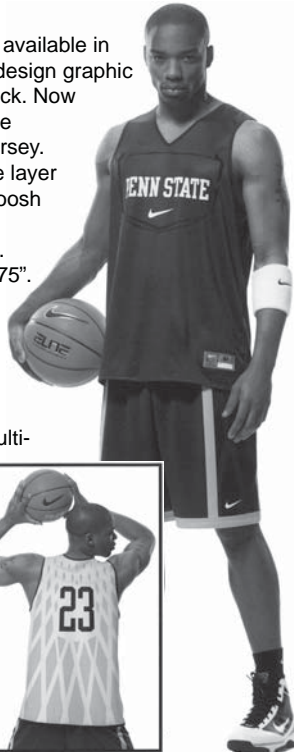
Prices are subject to change without notice. For up to date prices, call your Kimmel Sales or Customer Service Representatives. 1-800-541-6803

Nike Pinnacle Mesh 2.0 Jersey

Dri-FIT fabric reversible single-layer mesh jersey available in multi-team color combinations. Fully sublimated design graphic with team name on front and team number on back. Now with the ability to color block to white. Unique Nike basketball tonal design pattern on back side of jersey. Pinnacle mesh jersey provides the latest in single layer technology for optimal practice performance. Swoosh design trademark below team name. Nike Team Sports jock tag on dark color side, lower left hem. Body length: 29" (size large). Tall body length: +2.375". 100% polyester.

392916

Sizes: XS-4XL



Nike Pinnacle Mesh 2.0 Short

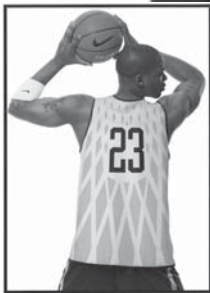
Dri-FIT fabric pinnacle mesh short available in multi-team color combinations. Fully sublimated with unique Nike basketball tonal net design graphic on both side panels and Swoosh design trademark on left side panel lower hem. Inseam: 9" (size large). Tall: +1.125". 100% polyester.

392915

Sizes: XS-4XL

**Special Order Item*

Call Kimmel For Pricing



Nike Pinnacle Mesh Practice Jersey

Dri-FIT fabric reversible single-layer mesh jersey available in multi-team color combinations. Fully sublimated design graphic with team name on front and name and number on back. Pinnacle mesh jersey provides the latest in single layer technology for optimal practice performance.

239330-Men's, 286878-Women's w/Racer Back

Nike Pinnacle Mesh Practice Short

Dri-FIT fabric Pinnacle mesh short available in multi-team color combinations. 9" inseam on regular sizing, 11" inseam on tall sizes. Fully sublimated with graphic containing team number and Swoosh design trademark.

239331-Men's, 286876-Women's

**Special Order Item*

Call Kimmel For Pricing



adidas adiPRO Practice Wear Reversible Jersey

The official practice jersey of the NBA. The body of the jersey has a wide shoulder width. Two-ply reversible tricot or Probrite mesh. 3-stripes down the sides of the jersey. Contrast color bound neck and armhole. Full athletic cut. Open bottom hem for screenprinting on both sides. Printed adidas logo on left shoulder strap (not on the right as shown in the picture).

Sizes: Men's - XS-4XL, Women's - XS-3XL

adidas adiPRO Workout Short

The official practice short of the NBA. Four panel basketball short. Four-needle covered self-material waistband and drawcord. Hemmed leg openings with V-notch. 3-stripes down the sides of the short. Men's short has a 10" inseam and women's short has a 8" inseam. Printed adidas logo on right hip (not on the right as shown in the picture). Available in tricot or Probrite mesh.

Sizes: Men's - XS-4XL, Women's - XS-3XL

**Special Order Item*

Call Kimmel For Pricing



Practice Gear Package

Don Alleson Adult Reversible Jersey

- 100% extreme mesh cationic colorfast polyester 70 denier tricot mesh.
- Double thickness body.
- Oversized "pro-cut" with wide shoulder design.
- Open bottom for printing.
- Sizes: S-XXXXL (Available in Men's, Women's and Youth)

560R

Colors: Black/Lt. Gold, Black/Orange, Black/Scar., Black/White, Brown/White, Card./White, Col. Blue/White, Dk. Green/White, Kelly/White, Lt. Gold/White, Mar./Lt. Gold, Mar./White, Navy/Lt. Gold, Navy/White, Orange/White, Purple/Lt. Gold, Purple/White, Royal/Lt. Gold, Royal/Scar., Royal/White, Scar./White, Texas Orange/White, Vegas Gold/Navy, Vegas Gold/White

Add 1-Color Numbers
on all 4 sides - \$12.00

\$36^{95*}

*8 Piece Minimum

~~\$53⁰⁰~~
Regular Price

Special Team Price
(Set includes: Jersey, Short
and 1-Color Decoration)

Don Alleson Adult Mesh Short

- 100% extreme mesh cationic colorfast polyester 70 denier tricot mesh.
- Double thickness body.
- 1 1/2" covered elastic waistband with inside drawcord.
- Oversized "Pro-cut".
- 9" inseam.
- Sizes: S-XXXXL (Available in Men's, Women's and Youth)

569P

Colors: Black/Lt. Gold, Black/Orange, Black/Scar., Black/White, Brown/White, Card./White, Col. Blue/White, Dk. Green/White, Kelly/White, Lt. Gold/White, Mar./Lt. Gold, Mar./White, Navy/Lt. Gold, Navy/White, Orange/White, Purple/Lt. Gold, Purple/White, Royal/Lt. Gold, Royal/Scar., Royal/White, Scar./White, Texas Orange/White, Vegas Gold/Navy, Vegas Gold/White



Don Alleson Reversible Jersey

- 100% eXtreme mock mesh Cationic colorfast polyester with moisture management fibers.
- Two color, double ply, fully reversible jersey.
- Self-material, contrast color side inserts straight up sides and around armholes, tapering from the armholes to the v-neck - side inserts are split with self-material, main body color inserts that start straight then come to a point in armholes.
- Open bottom, each side individually hemmed for printing.
- Cover hemmed armholes, traditional shoulder design.

Sizes: S-XXL

54MMR

Colors: Black/White, Col. Blue/White, Dk. Green/White, Maroon/White, Navy/White, Purple/White, Royal/White, Scarlet/White

Don Alleson Reversible Short

- 100% eXtreme mock mesh Cationic colorfast polyester with moisture management fibers.
- Two color, double ply, fully reversible short.
- Self-material, contrast color side inserts that start straight down sides and flare out to bottom - two self-material, main body color inserts split the side inserts to give the short an aggressive appearance (lower insert offers an excellent decoration).
- Open bottom, each side individually hemmed for printing.
- 2" fully reversible covered elastic waistband, inside drawcord (1 1/2" for youth).
- Adult graduated inseams: S (8"), M-L (9"), XL-XXXXL (10").

Sizes: S-XXL

54MMP

Colors: Black/White, Col. Blue/White, Dk. Green/White, Maroon/White, Navy/White, Purple/White, Royal/White, Scarlet/White

**Special Order Item*

Call Kimmel For Pricing



Misc. Apparel

Certain models have limited availability from manufacturers, check with your Kimmel sales rep for availability.

Prices are subject to change without notice. For up to date prices, call your Kimmel Sales or Customer Service Representatives. 1-800-541-6803

Apparel	Kimmel Price	Team Price
560R Alleson Adult Reversible Jersey.....	\$14.95	\$11.95
569P Alleson Adult Mesh Short.....	\$12.95	\$10.95
695HBM1 Russell Dri-Power Fleece Pullover Hood....	\$24.95	\$19.95
696HBM0 Russell Dri-Power® Fleece Pant.....	\$16.95	\$14.95
698HBM1 Russell Dri-Power Fleece Crew.....	\$16.95	\$14.95
267847 Nike Reckoning Team Polo.....	\$42.95	\$36.95
631DPM0 Russell Dri-Power LS Raglan Tee.....	\$19.95	\$17.95
660PMMK Russell Dri-Power Coaches Short.....	\$25.95	\$21.95
64030 Russell Short Sleeve T-Shirt.....	\$5.95	\$4.95

Russell Dri-Power Fleece® Crew

Crewneck collar with V-patch. Full length set-in sleeve Spandex reinforced rib knit collar, V-patch, cuffs and waistband.

698HBM1

Sizes: S-XXL

Colors: Oxford, Birch, Black, Bnt Orange, Col Blue, Card, DK Green, Gold, Navy, Roy, True Red

~~\$16.95~~
Kimmel Price

\$14.95
Team Price



Russell Dri-Power® Fleece Pullover Hood

Russell Athletic® Dri-Power® fleece is the classic fleece you know and love. Our hooded sweatshirt is always a top seller because of its great fit and moisture-wicking performance.

- Dri-Power® moisture-wicking technology helps keep you warm and dry
- Pocketed design allows for storage .

695HBM1

Sizes: S-XXL

Colors: Oxford, Birch, Black, Bnt Orange, Card, DK Green, Gold, Navy, Roy, True Red

~~\$24.95~~
Kimmel Price

\$19.95
Team Price



Russell Dri-Power® Long-Sleeve Raglan Tee

A performance essential for cooler weather, and for warm-up and cool-down, our Dri-Power® long-sleeve raglan tee is lightweight and comfortable.

- Raglan sleeves allow for full range of motion.
- Dri-Power® moisture-wicking technology helps keep you cool and dry.

631DPM0

Sizes: S-3XL

Colors: Black, Navy, White, GT Gold, Maroon, Steel, True Red, Purple, Royal, Cardinal, Columbia Blue, Dk. Green

~~\$19.95~~
Kimmel Price

\$17.95
Team Price



Russell Dri-Power® Fleece Non-Pocket Pant

Russell Athletic® Dri-Power® fleece is the classic fleece you know and love. Our classic silhouette Fleece Pant is available in a wide array of colors, and transitions easily from weekend to workout.

- Dri-Power® moisture-wicking technology helps keep you warm and dry.
- Internal drawcord adjusts for a great fit.

696HBM0

Sizes: S-XXL

Colors: Oxford, Birch, Black, Bnt Orange, Card, DK Green, Gold, Navy, Roy, True Red

~~\$16.95~~
Kimmel Price

\$14.95
Team Price



Under Armour HeatGear Sleeveless Tee

Our Signature Sleeveless Compression Tee just got better.

- New ergonomic fit adds to an overall comfort by reducing abrasion in high impact areas.
- Anti-Odor Technology prevents the growth of odor causing microbes.
- HeatGear® moisture transport ensures fast drying performance that keeps you cool and won't weigh you down.
- Delivered in our signature compression fit for bolstered muscle support and increased circulation resulting in higher efficiency output and increased stamina.
- UPF 30+ protects your skin from the sun's harmful rays and inhibits premature aging.

1201165

Sizes: M-XXL

Colors: White, Black, Navy

~~\$25.95~~
Kimmel Price

\$19.95
Team Price



Under Armour HeatGear Short Sleeve Tee

Our Signature Compression Tee just got better.

- New ergonomic fit adds to an overall comfort by reducing abrasion in high impact areas.
- Anti-Odor Technology prevents the growth of odor causing microbes.
- HeatGear® moisture transport ensures fast drying performance that keeps you cool and won't weigh you down.
- Delivered in our signature compression fit for bolstered muscle support and increased circulation resulting in higher efficiency output and increased stamina.
- UPF 30+ protects your skin from the sun's harmful rays and inhibits premature aging.
- 81% 5 oz. Polyester / 19% Elastane.

1201166

Sizes: M-XXL

Colors: White, Black, Navy

~~\$25.95~~
Kimmel Price

\$19.95
Team Price



McDavid HexPad® Thudd Short™

Watch the world's best players closely enough, and eventually you'll see the truth. They're all wearing HexPad® protective apparel. Worn by Dwyane Wade, the Original HexMan™, and the top players in professional basketball, HexPad® is also a favorite among top college basketball players as well. The #757 Thudd Short™ is a pro-style compression short featuring our revolutionary Mono-cellular HexPad® Technology to protect the hips, tail bone, and thighs. This very versatile short is perfect for added protection in almost any sport activity.

- Compression fabric supports large muscle groups to reduce muscle pulls and fatigue.
- Prevents skin irritations, chaffing, and abrasions.
- HydraVent hDc™ Moisture Management Technology keeps athletes cool and dry.

757T

Sizes: S-XXL

Colors: Grey

~~\$59.95~~
Kimmel Price

\$49.95
Team Price



McDavid HexPad™ V-Hex™ Body Shirt

Watch the world's best players closely enough, and eventually you'll see the truth. They're all wearing HexPad protective apparel. Worn by Dwyane Wade and the top players in professional basketball. The V-Hex™ Body Shirt is designed with narrow shoulders and a "V" neck with HexPads™ to protect the ribs and spine. Compression fabric moves with your body to prevent skin irritations, chaffing, and abrasions. Ultra hDc™ Moisture Management Technology for heat control, comfort and performance. Machine wash warm, use mild detergent, non-chlorine bleach, tumble dry low or line dry.

7860

***Special Order Item
Call Kimmel For Pricing**

~~\$59.95~~
Kimmel Price

\$49.95
Team Price



Miscellaneous Equipment, Score Books & Sports Medicine

Certain models have limited availability from manufacturers, check with your Kimmel sales rep for availability.

Prices are subject to change without notice. For up to date prices, call your Kimmel Sales or Customer Service Representatives. 1-800-541-6803

Dry Erase Board

- BKBBD 9" x 16"\$11.95
- TSRM1 12" x 18"\$13.95



Replacement Pen

- PEN\$1.95

KBA Spirit Playmaker Plus Coaches Board

NEW KBA SPIRIT PLAYMAKER PLUS is an injected molded high impact polystyrene plastic board for durability. Court lines are buried deep into a white dry erase finish. The backside of the board has a large 1/2 court buried in this deep dry erase finish. Size 9" x 15.5" - Briefcase Size.



- VRM1 **\$16⁹⁵**

Team Price

TAG Plastic Water Bottle Carrier

Holds 6 one quart drinking bottles (sold separately below). Collapses flat for easy, space-saving storage. Durable PVC construction for long-use life.



- TBC861 **\$15⁹⁵**

Team Price

Slipp-Nott Traction Matt

Walk across the Slipp-Nott™ mat whenever you need traction. When the top sheet gets too dirty...simply peel off the dirty top sheet! Mats are replaceable! There are 60 sheets per pad (included). High impact, 18" x 19" ABS base with ribbed rubber backing.



- SS1 **\$99⁹⁵**

Team Price

75 Replacement Sheets

- SM1\$42.95

TAG Flip-A-Score Scoreboard

6" NOS. 0-99 DOUBLE SIDES Plastic board 20" x 12". Can be used for any sport. Score from 0 to 99 for 2 teams. White number against Red or Blue background. "HOME" and "GUEST" stickers (not shown in picture).



- TFS318 **\$39⁹⁵**

Team Price

Robertson All-Stat Scorebook

Double page spreads to score 30 games. Record scoring and fouls by team and individual players. Developed by local coaching legend, Dave Robertson.



- RAS **\$12⁹⁵**

Team Price

Mark V Scorebook

This is the top selling basketball scorebook in the world. Comprehensive, easy to use, and the highest quality construction. The standard for all levels of competition since 1966. 15 players, 30 games. Wire-0 bound.



- MARKV **\$5⁹⁵**

Team Price

NFHS 2011-12 Rulebook

NFBKB



- \$8⁹⁵**

Team Price

Mueller Water Bottle Carrier

Heavy-duty steel wire holder holds 6 quart-size bottles. Special plastic coating prevents rust, protects furniture and equipment from scratches. Sold empty, bottles not included.



- 020503 **\$17⁹⁵**

Team Price

Mueller Water Bottles

- 020601 - Quart Bottle - Push/Pull Top\$2.95
- 020544 - Quart Bottle - w/Straw\$2.95



Mueller Medical Kit

Heavy-duty metal kit. Special hip-roof design allows storage of large 10 oz. aerosol cans. Metal divider in base of kit prevents cans from tipping over.

Size: 15" x 9.75" x 10.25", capacity .80 cu. ft. Empty weight 8.5 lbs. A tape tote is included.



- 200707 **\$144⁹⁵**

Team Price

Looking for Pre-Wrap, Tape or Braces?

Contact your Kimmel Sales or Customer Service Reps for all of your Sports Medicine Needs.

800-541-6803



Online Custom School Spirit Pack Specials

Made special for each school, league/clubs, booster clubs. Pick the items that best fit your team and Kimmel will do the rest. With our in-house screen printing and embroidery shops we offer timely turn around and outstanding service. All offered products are available for purchase online. Call your local Kimmel Sales rep today to discuss options and pricing.

Choose from among:

Hooded Sweatshirts, Crew Neck Sweatshirts, Short Sleeve/Long Sleeve T-Shirts, Polos and Game Day Apparel, Training Suits, Shorts and Sweatpants, Team Bags, Beanies or Hats, and much more.



Kimmel Athletic Custom Uniform Design & Pricing

Certain models have limited availability from manufacturers, check with your Kimmel sales rep for availability.

Prices are subject to change without notice. For up to date prices, call your Kimmel Sales or Customer Service Representatives. 1-800-541-6803

Speedline Athletic Wear Custom Uniforms

Design a look that stands apart from the crowd!

Custom Uniform Packages available upon request. See different options and color combinations in various styles to best fit your team. Show your team different color options in your team colors & different styles that will excite and fire up your team for seasons to come. Design a uniform that will set your team apart from the competition.

For details and Custom Uniform Color Mock-Ups, call your Kimmel Athletic Sales or Customer Service Rep



Russell Athletic Custom Uniforms

For those who exceed expectations and influence the game. For those who lick their chops in the fourth quarter, with the game on the line. For those who have what it takes on the inside, Russell has what it takes on the outside.

Russell Athletic proudly outfits colleges such as Western Kentucky University and Georgia Tech.

Visit Russell's website, www.russellathletic.com

For details and Custom Uniform Color Mock-Ups, call your Kimmel Athletic Sales or Customer Service Rep



adidas Custom Team Apparel

Sport Performance adidas Brand Definition: The guiding principle of the adidas Sport Performance Brand is the equip all athletes to achieve their "impossible." This is achieved through the ongoing development of products that focus on function and technological innovation.

adidas Custom Team Apparel does not stop at uniforms. You can customize your shooting shirts and team warm-ups. Customize the cloth styles and insert colors to match your look from pre-game to post-game.

Check out miTEAM Custom Uniforms, Shooting Shirts and Warmups at www.miteam.com.

Visit adidas's Team website, www.adidas-team.com.

For details and Custom Uniform Color Mock-Ups, call your Kimmel Athletic Sales or Customer Service Rep



TAG Team Uniforms

Our ultra simplified pricing allows you to choose a custom uniform, shooters shirt or warm up pant and know exactly what your cost will be. **Uniforms are sold as sets.** All uniforms that are grouped in each category are the same price no matter what fabric you choose.

Finish off the uniform with a shooter shirt, warm up jacket or warm up pant. **Each are sold individually.**

As with the uniform, items within the same category are the same price no matter what fabric you choose.

Visit TAG Team Uniforms website for their online uniform designer.

www.tagteamuniforms.com

Click the online design button to access the uniform designer tool.



For details and Custom Uniform Color Mock-Ups, call your Kimmel Athletic Sales or Customer Service Rep



509-326-7710 • 800-541-6803 • 202 E. Mission Ave. • Spokane, WA 99202
509-573-9001 • 800-554-2366 • 2105 W. Lincoln Ave. Ste. 100 • Yakima, WA 98902
425-882-1456 • 800-732-9259 • 16101 NE. 87th St. • Redmond, WA 98052
208-277-1020 • 866-440-5461 • 405 W. Neider Suite 106 #4 • Coeur d'Alene, ID 83814